

*surface®



ANJELICA HUSTON issue n°13

CHINA CHOW > MAD MAX PERLICH > ANN DUVING > ELIZABETH PEYTON >

ISABEL & RUBEN TOLDO > BUCS > TRIEVERY CORPORATION >

TORIAS RENBERGER > APPARATUS: LA FEMME MÉCANIQUE >

TOMORROW'S PEOPLE + POP CULTURE UNDER SURVEILLANCE >



content

148

APPARATUS

118

MANSON ROCKS



TWILIGHT

32



INNOCENCE MISSION

#66



76

GATHERING PLACE

22

ENTREPRENEUR'S DESIGN

FASHION:

- 32 ***Carol Christian Poell** by Dah Len
Decent Exposure
- 32 ***Twilight** by Robert Allen
Rise & Shine
- 32 ***Avant Guardian**
Benoit Missolin: Paris Texas
- 48 **Missionaries** by Albert Bray
The Age of Innocence
- 56 **Gathering Place** by Gil Blank
Wrinkles In Time
- 64 **Apparatus** by Donna Trope
La Femme Mécanique
- 140 ***surplus** good buys
Fashion Directory

'ON THE COVER:

Image Robert Fleischauer / L'AMOR
hair Peter Saur (for PUL MITCHELL SALON HARLOW) / OUDER
makeup Justine Lobell (for SOUL COUVERTURE) / SWANBEE
image manipulation Mindy Gross / ATTRICK BARNES



© 1997 by Carol Christian Poell. All rights reserved. Images by Dah Len. Styling by [unreadable]. Hair by [unreadable]. Makeup by [unreadable].

Arch-cropped tuxedo jacket, waxed linen
hullerpants & red arch-cropped jacket (inset): all by *



carol christian poell * I images Dah Len

Fashion's alluring discovery of uncharted erogenous zones hasn't been an egalitarian accomplishment. The "new" sexy—the slashing and clasping at a woman's elbow, clavicle and lower back—has yet to trickle into menswear without compromising masculinity. Carol Christian Poell's Spring '98 "improper" collection cunningly tailors the new fetishes to fit the brash male impulse toward self-exposure. Poell's garments hang below the belt, expose the shoulder blades and cut away at the hip, but avoid appearing obscene by the use of dense fabrics and smart, street-savvy styling. Poell, born in Austria but now based in Milan, produced his first solo collection in 1994. His masculine structuring can be easily traced to his patriarchal tutelage—he began tailoring with his stepfather at 15. Poell projects traditional and forgotten tailoring techniques into the future and considers his aesthetic an "industrial design approach to fashion". His cutting and stitching is innovative and luxuriant, brazen and unapologetic...and best accessorized with a smirk.*




x supply & demand





 carol christian poell

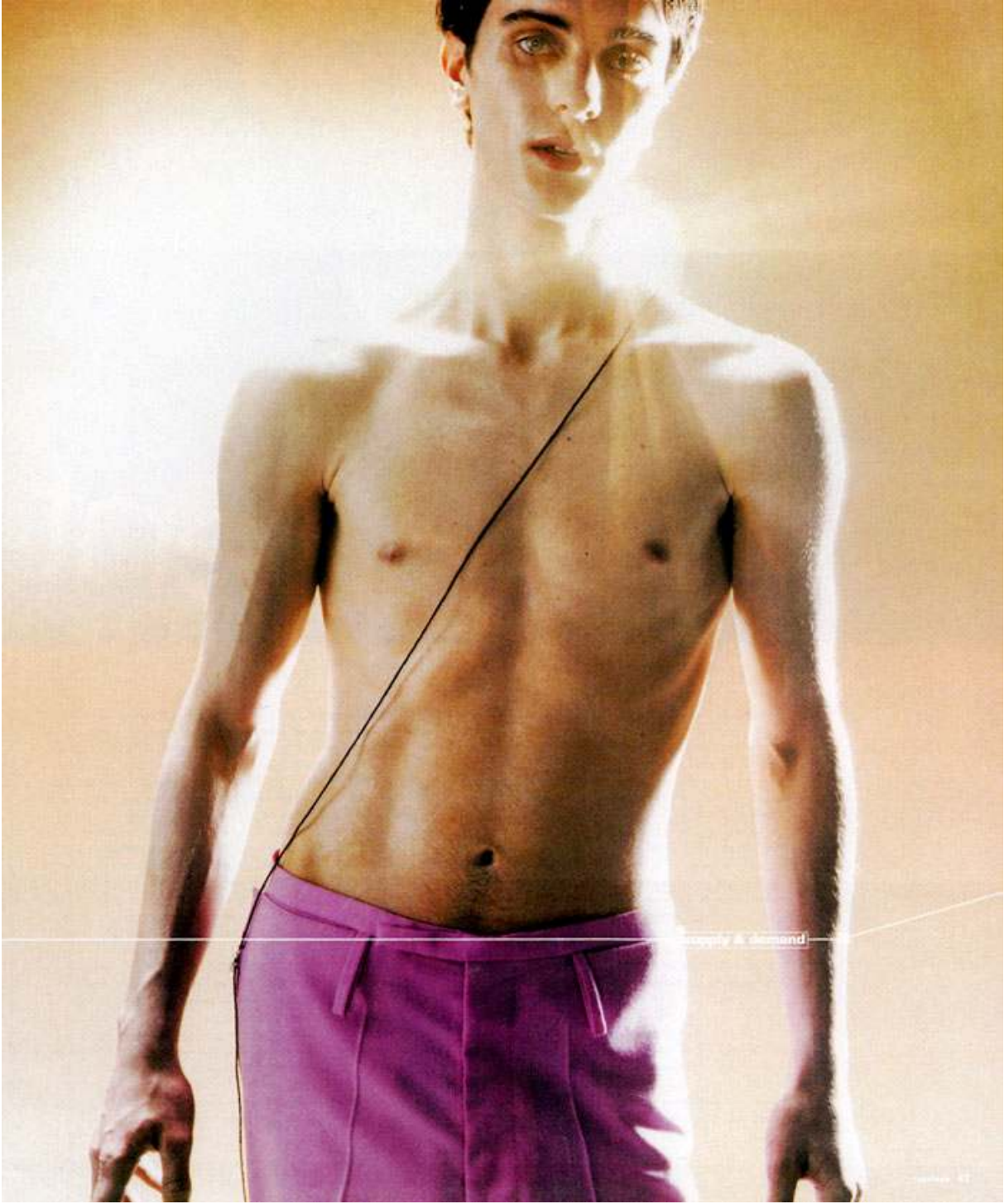
Fitted white cut-very tank top &
pinstriped black halter wrap
pants opposite page 174 by
Carol Christian
Poell

 supply & demand



 carol christian poell

100% Polyester Jacket - Jacket 8. 10
and long sleeve (cotton) jacket
© by Carol Christian Poell



supply & demand

01