



BIMESTRALE DI RICERCA E DESIGN MONTHLY OF FASHION RESEARCH AND DESIGN

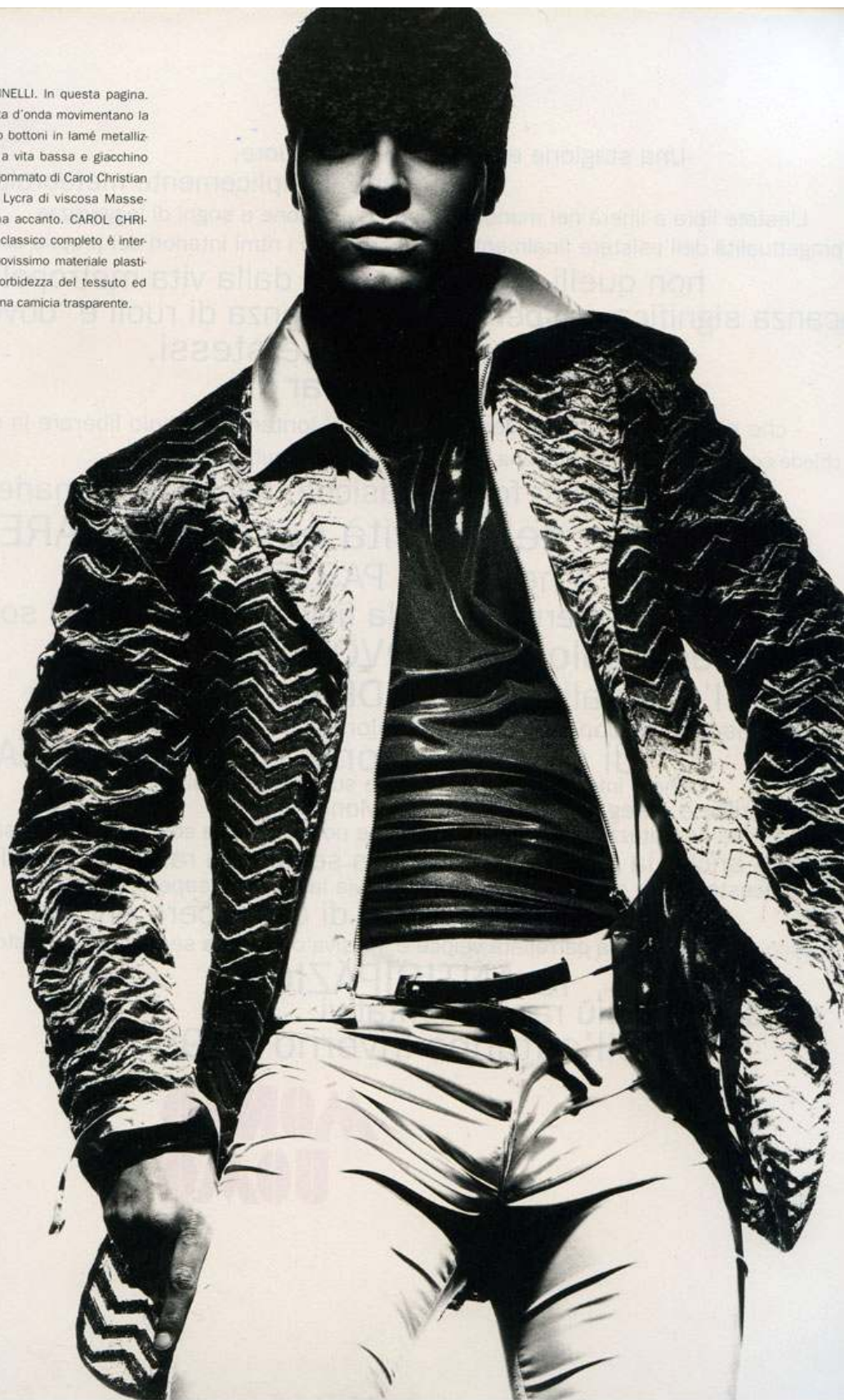
summer:

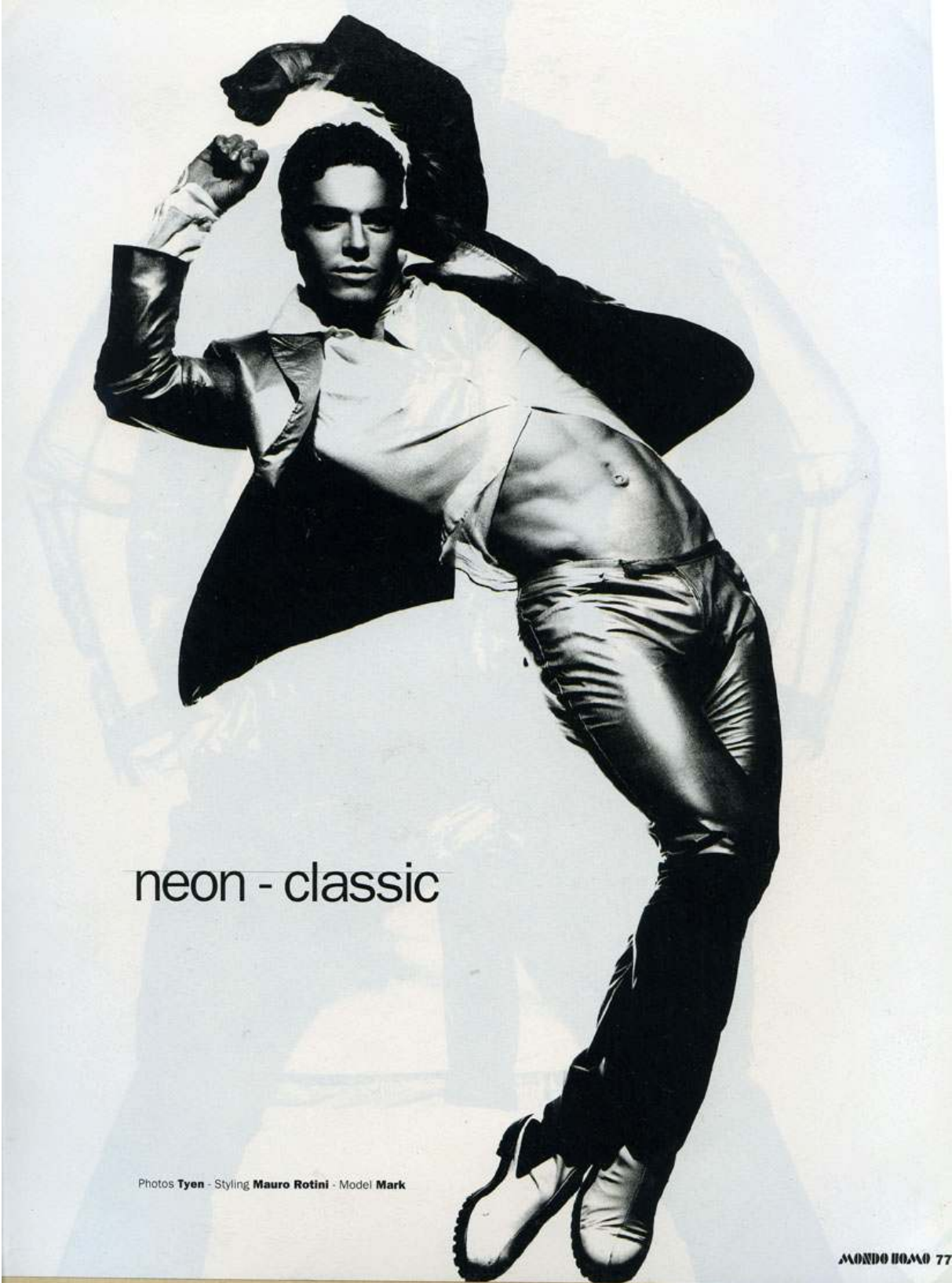
natural
born
fashion



9 770393 808002

CALUGI & GIANNELLI. In questa pagina. Cuciture a cresta d'onda movimentano la giacca a quattro bottoni in lamé metallizzato. Pantaloni a vita bassa e giacchino con zip in raso gommato di Carol Christian Poell. T-shirt in Lycra di viscosa Massimo. Nella pagina accanto, CAROL CHRISTIAN POELL. Il classico completo è interpretato in un nuovissimo materiale plastico che ha la morbidezza del tessuto ed è indossato su una camicia trasparente.





neon - classic

Photos **Tyen** - Styling **Mauro Rotini** - Model **Mark**

MONDO HOMO 77

last stop: winter

- Next stop: the purity of GIORGIO ARMANI
- Next stop: the new-knit of MISSONI
- Next stop: the color flashes of GUCCI
- Next stop: the mixed tweeds of VERRI
- Next stop: the long coat of ROMEO GIGLI
- Next stop: the english humour of PAUL SMITH
- Next stop: the glam of KATHARINE HAMNETT
- Next stop: the relax of MOSCHINO
- Next stop: the tailored suit of VALENTINO
- Next stop: the optical of VERSUS
- Next stop: the eco-fur of KRIZIA
- Next stop: the pastel shades of GIANNI VERSACE
- Next stop: the techno-chic of CAROL CHRISTIAN POELL
- Next stop: the simplicity of EMPORIO ARMANI
- Next stop: the ethnic of YOHJI YAMAMOTO
- Next stop: the dandy of DOLCE & GABBANA
- Next stop: the tartan of GIULIANO FUJIWARA
- Next stop: the luxury of GIANFRANCO FERRÈ
- Next stop: the velvet of KENZO
- Next stop: the new-country of CALUGI E GIANNELLI
- Next stop: the proportions of D & G

Photos by **Michelangelo Di Battista** - Servizio di **Valentina Pederzini** - Styling **Mauro Rotini e Filippo La Bruna**
Grooming **Jean Louis David** by Giusi Sullis - Models **George Clements, Karl Pease, Nick Scotti, Heinz Lü, James Gooding, Andrea B.**



CAROL
CHRISTIAN
POELL